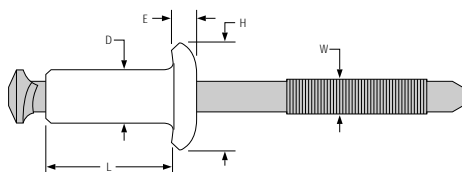
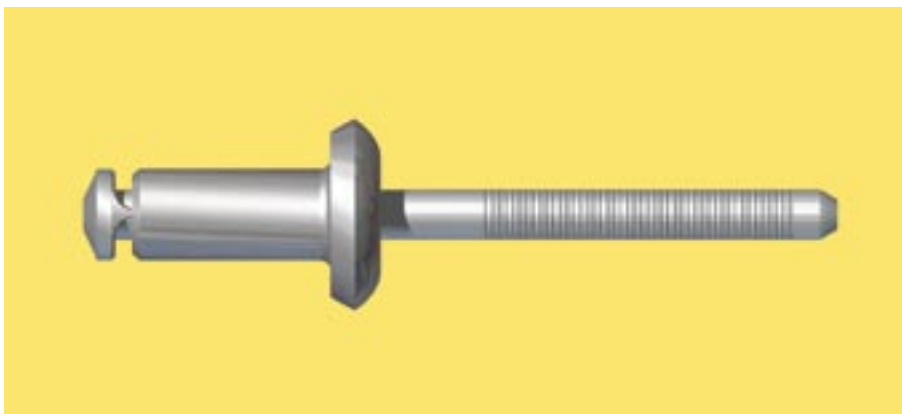
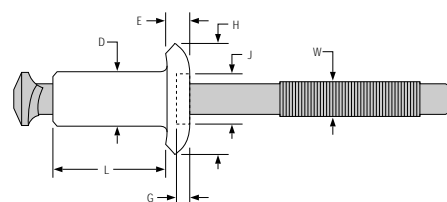


Peel™ LockRivet™

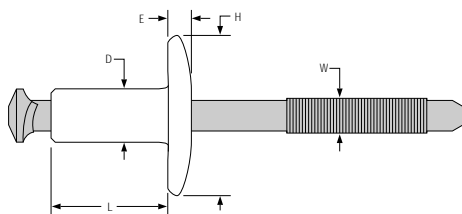
This proven LockRivet™ features a "Secondary Grip Ring" for added mandrel retention. 3/16" and 1/4" diameter heavy-duty rivets are designed for maximum clamp-up strength with exceptional vibration-free characteristics. This self-plugging fastener yields extremely high shear and tensile values from its unique, hardened, locked-in-place mandrel and specially designed aluminum body.



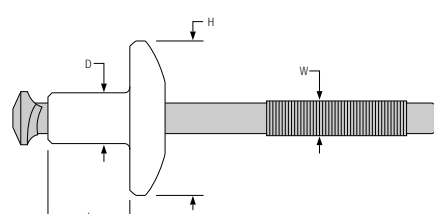
Standard Flange Head



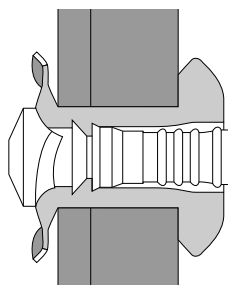
Multi-Grip Head



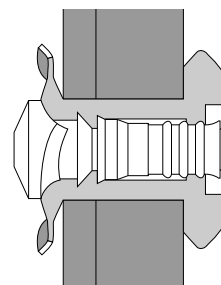
Large Flange Head



Large Flange Multi-Grip Head



Peel Lock Rivet



Multi-Grip Peel Lock Rivet

Dimensional Data—Peel LockRivet

Dia. (No.)	Hole Size	W	D	Reg. Flange Dome Head H	Large Flange Dome Head H	E	G	J
3/16 (6)	.192-.196	.116	.188	.390	.562	.093	.030	.200
1/4 (8)	.257-.261	.151	.249	.510	.750	.116	.057	.250

Dimensional Data—Multi-Grip Peel LockRivet

Dia. (No.)	Hole Size	W	D	Regular Flange Diameter H	Medium Flange Diameter H	Large Flange Diameter H
3/16 (6)	.192-.196	.116	.188	.375	.470	.625
1/4 (8)	.257-.261	.151	.250	.500	.625	.750

Grip Data—Peel LockRivets

Part Number	Overall Grip Range	Nominal Shank Length L
TABS6075L	.046-.075	.381
TABS6109	.079-.109	.405
TABS6203	.047-.203	.464
TABS6075L	.047-.203	.464
TABS6500	.398-.567	.840
TABS8140	.030-.140	.490
TABS814L	.090-.142	.490
TABS814LR	.090-.142	.490
TABS814R	.090-.125	.490
TABS8177R	.082-.180	.490
TABS8187Y	.141-.187	.552
TABS8250R	.188-.250	.615
TABS825L	.188-.250	.615
TABS8620	.480-.620	.937
TABS8715	.520-.715	.940

Typical Installed Values—Peel LockRivets

Diameter	Min. Shear	Min. Tensile	Mandrel Pushout
3/16	1100	800	150
1/4	2000	1300	200

Grip Data—Universal Multi-Grip SGR Peel Rivets

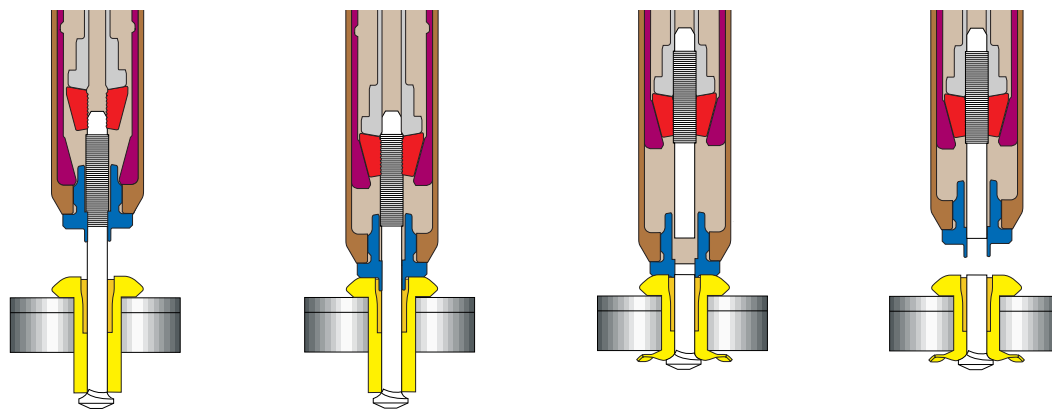
Part Number	Overall Grip Range	Flush Break Grip Range	Nominal Shank Length L
TABS625MSG	.020-.250	.100-.250	.455
TABS66MSG	.250-.575	.400-.575	.834
TABS82SG	.020-.217	.100-.217	.490
TABS82MSG	.020-.217	.100-.217	.490
TABS84MSG	.201-.400	.256-.400	.689
TABS865	.401-.650	.500-.650	.937

Installation Tooling

Diameter	Installation Tool	Nose Assembly	Type	Use
3/16	2015	125283 (Insert)	Pneudraulic	Production
	202	99-3460 99-3461	Pneudraulic	Production
	229	99-3460 99-3461	Pneudraulic	Prod. or Maint. & Repair
	2480	99-3460 99-3461	Hydraulic	Production
1/4	2015	125284 (Insert)	Pneudraulic	Prod. or Maint. & Repair
	202	99-3462 99-3463	Pneudraulic	Production
	229	99-3462 99-3463	Pneudraulic	Prod. or Maint. & Repair
	2480	99-3462 99-3463	Hydraulic	Production
	HK150-I	202155	Hand Hydraulic	Maintenance & Repair
	AK180-I	202155	Pneudraulic	Maintenance & Repair

Replacement anvil inserts: 3/16 use 124153 ; 1/4 use 124155

Installation Sequence



[Click Here to view animation of installation sequence](#)

Part Number Identification

T A B S 8 14 L R ()

